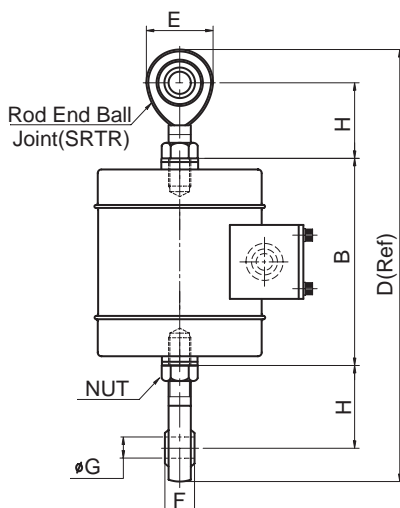
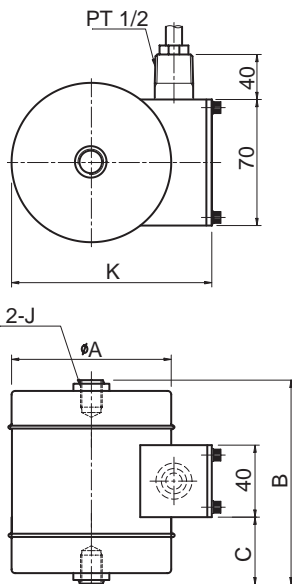


Model TR Series

Tension Load Cell (50Kgf ~ 20tf)
Canister Type



The TR series load cells are designed for measuring tensile loads up to 20 tonnes are particularly suited for industrial application where optimum precision is needed. Featuring high-alloy tool steel construction for excellent repeatability, the unique element design provides high rated output (3mV/V) with low deflection. It is recommended that the load cell should incorporate rod end ball joint assemblies to reduce the overall length.

- Hermetically sealed
- Robust high capacity design
- High rated output (3mV/V)

SPECIFICATIONS

MODEL	TRU	TRC	TRD
Rated capacity (R.C.)	50, 100, 200, 300, 500Kgf, 1, 2, 3, 5, 10, 20tf		
Rated output (R.O.)	3mV/V ±0.1%		3mV/V ±0.5%
Non-linearity	≤0.02% R.O.	≤0.05% R.O.	≤0.1% R.O.
Hysteresis	≤0.02% R.O.		≤0.1% R.O.
Non-repeatability	≤0.02% R.O.		≤0.1% R.O.
Creep error	≤0.02% in 20min.		≤0.1% in 20min.
Zero balance	≤1% R.O.		
Compensated temperature range	-10 ~ 70 °C		
Operating temperature range	-20 ~ 80 °C		
Temp. effect on rated output	≤0.03% LOAD/10 °C		≤0.05% LOAD/10 °C
Temp. effect on zero balance	≤0.03% R.O./10 °C		≤0.05% R.O./10 °C
Terminal input resistance	350 Ohms ±3.5 Ohms		
Terminal output resistance	350 Ohms ±5 Ohms		
Insulation resistance (Min.)	5000 MOhms at 50V DC		2000 MOhms at 50V DC
Excitation Voltage	10V(Recommended), 15V(Maximum)		
Electrical connection	Ø9mmx3m (22AWG x 4Core Shielded)		
Protection class	meets IP 67		
Safe overload	150% R.C		
Ultimate overload	300% R.C		

ORDERING INFORMATION

TRC - 5T

MODEL	CAPACITY
TRU	50,100,200,300,500Kgf
TRC	1,2,3,5,10,20tf
TRD	

WIRING INFORMATION

RED	: EXC. (+)	WHITE	: EXC. (-)
GREEN	: SIG. (+)	BLUE	: SIG. (-)
BARE	: GND		

Dimensions-mm

Rated Capacity	A	B	C	D	E	F	G	H	J	K	Rod End Ball Joints	Weight (kg)
50~300kgf (980.7N ~2942N)	88	110	35	228	34	16	12	41	M12 x 1.25 D.13	115	SRTR1	2.8
500~1000kgf (4903N~9807N)		106	33	224								
2tf ~5tf (19.61KN~49.03KN)	88	145	52.5	319	62	28	22	55	M24 x 2 D.30	115	SRTR2	4.5
10tf (98.07KN)	138	210	70	510	100	43	40	100	M39 x 2 D.50	171	SRTR3	12.5
20tf (196.1KN)	164	283	120	635	120	53	50	115	M50 x 2 D.65	189	SRTR4	27.4