

Model DBWR Series

S- Beam Load Cell (500kg ~ 5t)

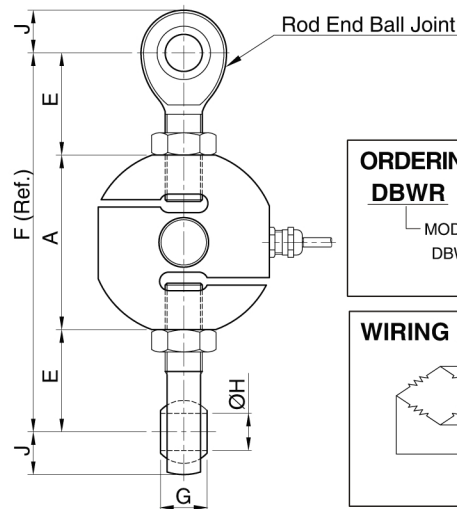
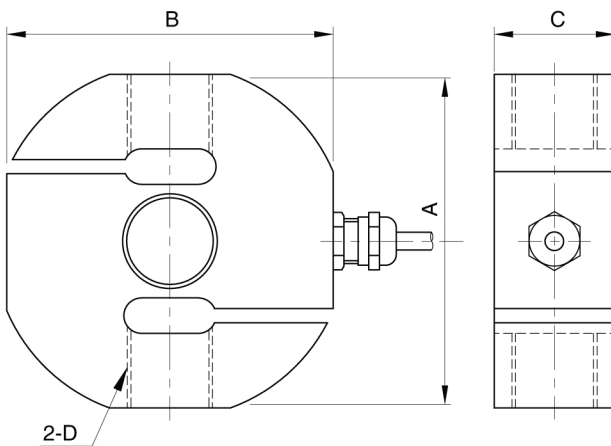
The DBWR S-beam load cell is designed for industrial scale conversion and a variety of process applications.

- 17-4PH stainless steel construction for high accuracy and corrosion resistance.
- Fully welded seal with stainless steel cover for hostile environment applications.



SPECIFICATIONS

| MODEL | DBWR |
|-------------------------------|---------------------------------|
| Rated capacity (R.C.) | 500kg, 1, 2, 3, 5t |
| Rated output(R.O.) | 2mV/V ± 0.3% |
| Non-linearity | ≤0.03% R.O. |
| Hysteresis | ≤0.03% R.O. |
| Non-repeatability | ≤0.02% R.O. |
| Creep error | ≤0.03% in 20min. |
| Zero balance | ≤1% R.O. |
| Compensated temperature range | -10 ~ 70°C |
| Operating temperature range | -20 ~ 80°C |
| Temp. effect on rated output | ≤0.03% LOAD/10°C |
| Temp. effect on zero balance | ≤0.03% R.O./10°C |
| Terminal input resistance | 350 Ohms ± 3.5 Ohms |
| Terminal output resistance | 350 Ohms ± 5 Ohms |
| Insulation resistance (Min.) | 2000 MOhms at 50V DC |
| Excitation voltage | 10V(Recommended), 15V(Max.) |
| Electrical connection | Ø5mmx3m(22AWG x 4Core Shielded) |
| Protection class | meets IP 68 |
| Safe overload | 150% R.C |
| Ultimate overload | 300% R.C |



| ORDERING INFORMATION | |
|----------------------|-----------------------------------|
| DBWR | - 2T |
| MODEL DBWR | CAPACITY 500kg, 1, 2, 3, 5 ton |

| WIRING INFORMATION | |
|--------------------|--|
| | <ul style="list-style-type: none"> RED : EXC. (+) GREEN : SIG. (+) WHITE : EXC. (-) BLUE : SIG. (-) BARE : GND. |

Dimension-mm

| Rated Capacity | A | B | C | D | E | F | G | H | J | Rod End Ball Joints | Weight (kg) |
|----------------------------|-----|-----|----|-----------|----|-----|----|----|----|---------------------|-------------|
| 500kg, 1t (4.903, 9.807kN) | 76 | 76 | 30 | M12x1.75P | 41 | 158 | 16 | 12 | 16 | SRDB 2 | 1.1 |
| 2t (19.61kN) | 94 | 94 | 32 | M20x1.5P | 55 | 204 | 25 | 20 | 23 | SRDB 3 | 1.6 |
| 3t (29.42kN) | 114 | 114 | 34 | M24x2P | 55 | 224 | 28 | 22 | 32 | SRDB 4 | 2.6 |
| 5t (49.03kN) | 114 | 114 | 40 | M24x2P | 55 | 224 | 28 | 22 | 32 | SRDB 4 | 3.1 |