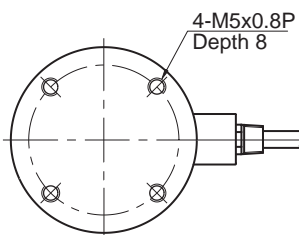
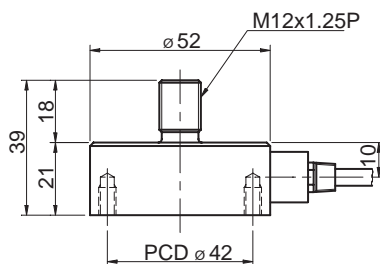
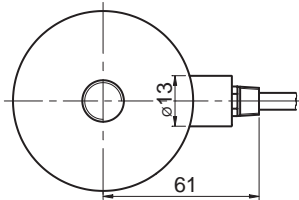
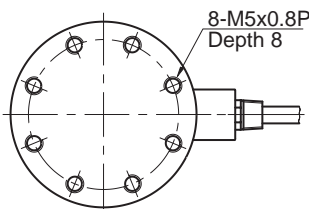


Model CDES Series

Tension & Compression
Low Profile Load Cell (50Kgf ~ 2tf)



Bottom View (50 ~500Kgf)



Bottom View (1 ~2tf)

The model CDES miniature type is designed for low profile tension and compression service. Its compact size makes the cell ideal for a wide range of applications including testing & weighing systems.

- 17-4PH Stainless steel construction
- Fully welded seal with stainless steel cover for hostile environment applications.
- Compact size with low profile.

SPECIFICATIONS

MODEL	CDES
Rated capacity (R.C.)	50,100,200,500Kgf 1,2tf
Rated output(R.O.)	2mV/V ± 0.25%
Non-linearity	≤ 0.15% R.O.
Hysteresis	≤ 0.15% R.O.
Non-repeatability	≤ 0.1% R.O.
Creep error	≤ 0.03% in 20min.
Zero balance	≤ 1% R.O.
Compensated temperature range	-10 ~ 70°C
Operating temperature range	-20 ~ 80°C
Temp. effect on rated output	≤ 0.1% LOAD/10 °C
Temp. effect on zero balance	≤ 0.1% R.O./10 °C
Terminal input resistance	700 Ohms ±10 Ohms
Terminal output resistance	700 Ohms ±10 Ohms
Insulation resistance (Min.)	2000 MOhms at 50V DC
Excitation Voltage	10V(Recommended) /15V(Maximun)
Electrical connection	ø5mmx3m(22AWG x 4Core Shielded)
Protection class	meets IP 67
Safe overload	150% R.C
Ultimate overload	300% R.C

ORDERING INFORMATION

Load Cell	CDES - 2T	
	MODEL	CAPACITY 50, 100, 200, 500Kgf, 1, 2tf
Tension Plate	TPCD - 2T	
	MODEL	CAPACITY 50, 100, 200, 500Kgf, 1, 2tf

WIRING INFORMATION

RED : EXC. (+) WHITE : EXC. (-) GREEN : SIG. (+) BLUE : SIG. (-) BARE : GND

