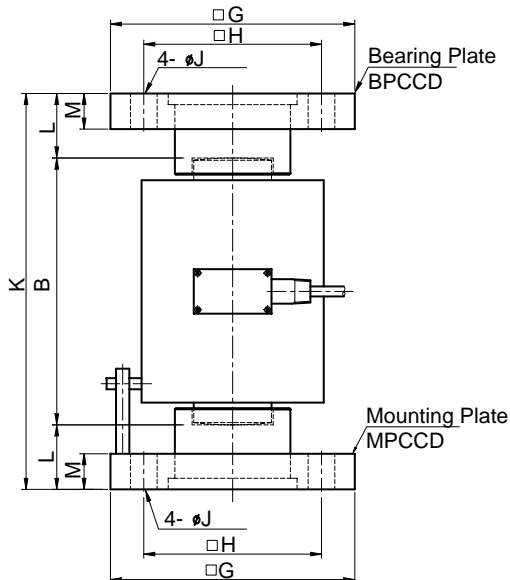
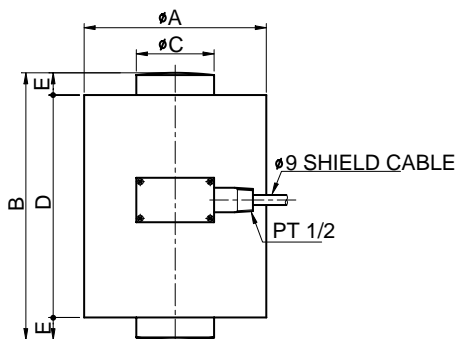


Model CCDH/CCDHS Series Compression Load Cell (10t ~ 500t) Canister Type

The CCDH/CCDHS series are designed for heavy duty weighing applications, including hoppers, tanks, silos and high capacity scales.

- Insensitive to side load
- Double convex type
- Robust high capacity design
- High alloy steel or 17-4PH stainless steel construction



SPECIFICATIONS

MODEL	CCDH	CCDHS
Rated capacity (R.C.)	10, 20, 30, 50, 100, 200, 300, 500 t	
Rated output (R.O.)	1.5mV/V ± 0.5%	
Load Cell Material	Painted alloy steel	17-4PH Stainless Steel
Non-linearity	≤ 0.1% R.O.	
Hysteresis	≤ 0.1% R.O.	
Non-repeatability	≤ 0.05% R.O.	
Creep error	≤ 0.05% in 20min.	
Zero balance	≤ 1% R.O.	
Compensated temperature range	-10 ~ 40°C	
Operating temperature range	-20 ~ 70°C	
Temp. effect on rated output	≤ 0.03% LOAD/10°C	
Temp. effect on zero balance	≤ 0.03% R.O./10	
Terminal input resistance	350 Ohms ± 3.5 Ohms	
Terminal output resistance	350 Ohms ± 5 Ohms	
Insulation resistance (Min.)	2000 MOhms at 50V DC	
Excitation voltage	10V(Recommended), 18V(Maximum)	
Electrical connection	ø 9mmx5m(22AWG x 4Core Shielded)	
Protection class	meets IP 67	
Safe overload	150% R.C	
Ultimate overload	300% R.C	

ORDERING INFORMATION

CCDH - 5T

MODEL	CAPACITY
CCDH	10, 20, 30, 50, 100, 200, 300, 500 t
CCDHS	

WIRING INFORMATION

RED	: EXC. (+)	WHITE	: EXC. (-)
GREEN	: SIG. (+)	BLUE	: SIG. (-)
BARE	: GND		

Dimensions-mm

Rated Capacity	A	B	C	D	E	F	G	H	J	K	L	M	Bearing Plate	Mounting Plate	Weight (Kg)
10t (98.07KN)	88	120	22	90	15	116	140	100	18	180	30	19	BPCCH1	MPCCH1	7.8
20t (196.1KN)	88	120	33	90	15	116	140	100	18	190	35	22	BPCCH2	MPCCH2	9.6
30t (294.2KN)	112	140	40	110	15	140	200	150	23	220	40	25	BPCCH3	MPCCH3	20.2
50t (490.3KN)	138	180	50	140	20	166	200	150	23	280	50	25	BPCCH4	MPCCH4	24.5
100t (980.7KN)	164	240	70	200	20	192	220	160	27	356	58	32	BPCCH5	MPCCH5	42.7
200t (1961KN)	215	260	100	210	25	243	280	220	39	396	68	40	BPCCH6	MPCCH6	86.4
300t (2942KN)	215	340	120	290	25	243	300	220	45	492	76	50	BPCCH7	MPCCH7	130.0
500t (4903KN)	265	390	155	330	30	293	380	280	50	568	89	65	BPCCH8	MPCCH8	253.1

* Specifications are subject to change without notice